

# ACTi NVR 3.0

## Quick User Guide

### 1 BEFORE YOU START

Thank you for using ACTi NVR 3.0 server system. This guide will demonstrate the fundamentals of how to:

- monitor live view and operate relevant live view functions
- search recordings
- export video

You may download ACTi NVR 3.0 User's Manual for detailed operation instructions from URL:

<http://www.acti.com/nvr3>

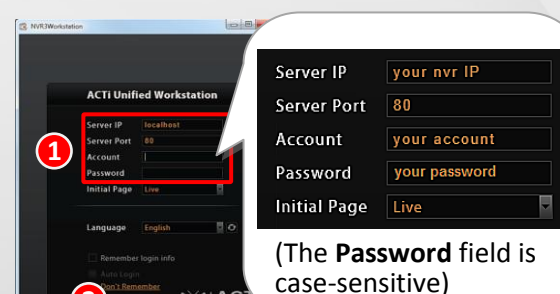
For technical support, please contact your system supplier.

### 2 LOGIN & LOGOUT

#### Login via Internet Explorer



#### Login via NVR3 Workstation



#### Logout from NVR

On top of the screen, click **Options**  → "Logout NVR"



### 3 OVERVIEW

Click the buttons on the right to switch between two main modes:

#### Live View

- See live view
- Control a PTZ camera
- Receive event alerts
- Record manually or take a snapshot



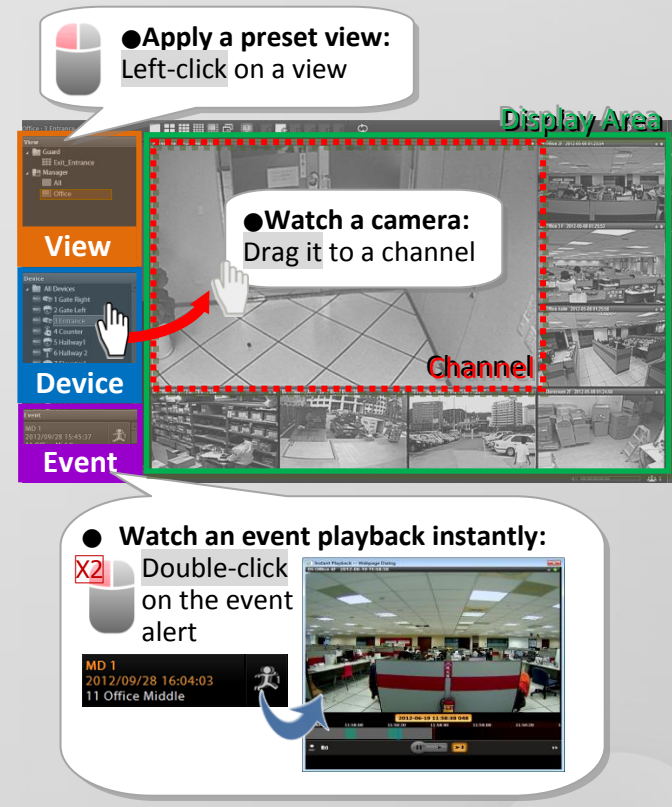
#### Playback

- Search / Playback recordings
- Export snapshots or video



### 4 LIVE VIEW

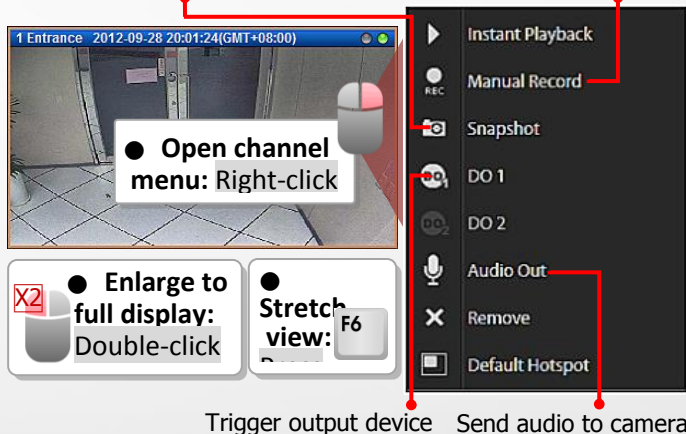
You will enter the default view layout upon logging in.



## 5 SINGLE CHANNEL OPTIONS

On **Live View** screen, select to focus a single channel.

Take a snapshot      Start / Stop recording manually



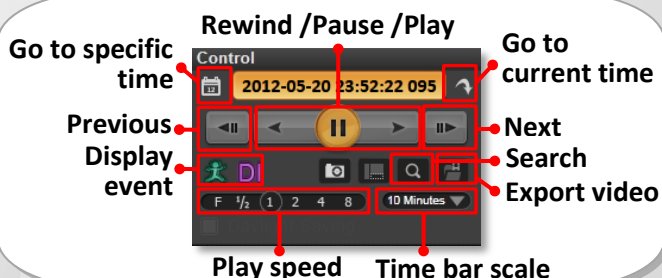
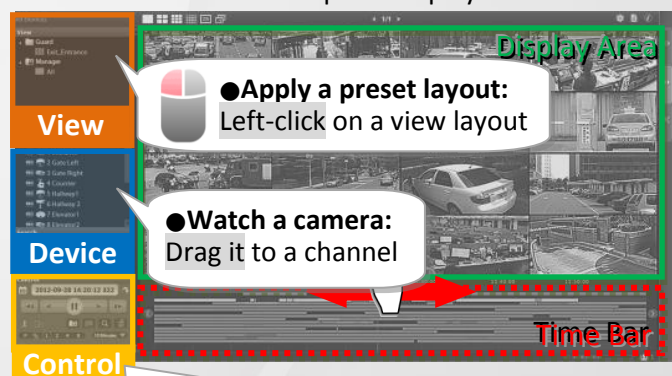
Trigger output device      Send audio to camera

Show live view windows on a map



## 7 SEARCH PLAYBACK

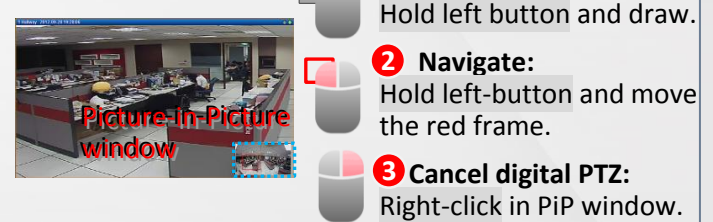
- On **Search** screen, select a View /drag a camera to **Display** area.
- Use the scroll wheel to adjust the time frame in the **Time Bar**, or drag it to find a specific scene, and use the controls on **Control** panel to play and search.



## 6 PTZ OPERATION

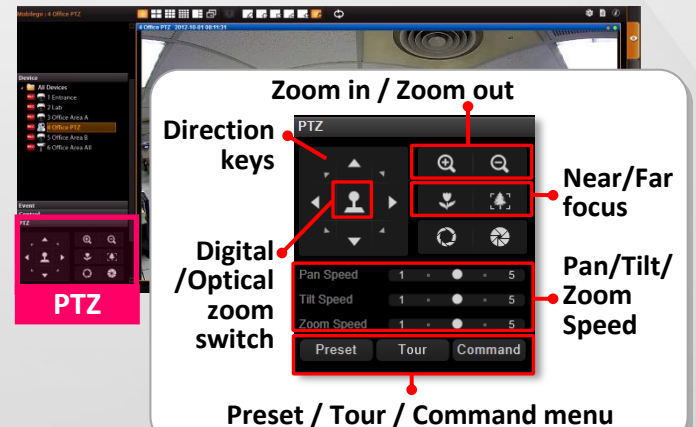
**Operate digital PTZ function**

Use the mouse to do digital PTZ operation on a selected channel.



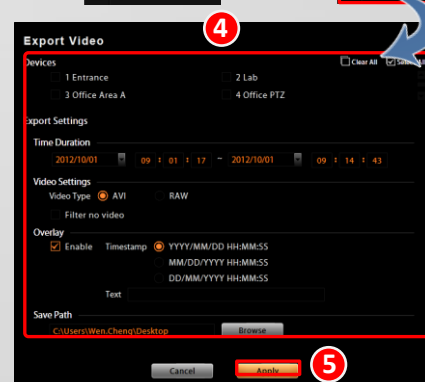
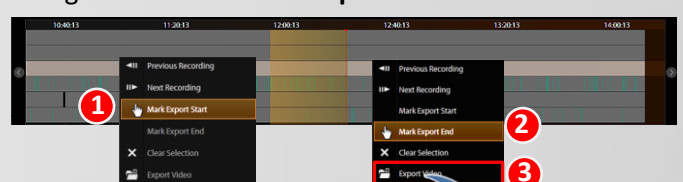
**Operate optical PTZ function**

Operate a PTZ camera with on-screen controls/joystick.



## 8 EXPORT VIDEO

- On **Time Bar**, drag to video start, right-click and select "**Mark Export Start**" on quick menu.
- Drag to video end, right-click and select "**Mark Export End**" on quick menu.
- Right-click and select "**Export Video**".



- Set the export settings, and then click "**Apply**".

**NOTE:** The exported video is saved to your designated file location; snapshots are saved to Windows default picture folder as .jpg file.